



# Meraki Insight

## Optimize User Experience, Accelerate IT

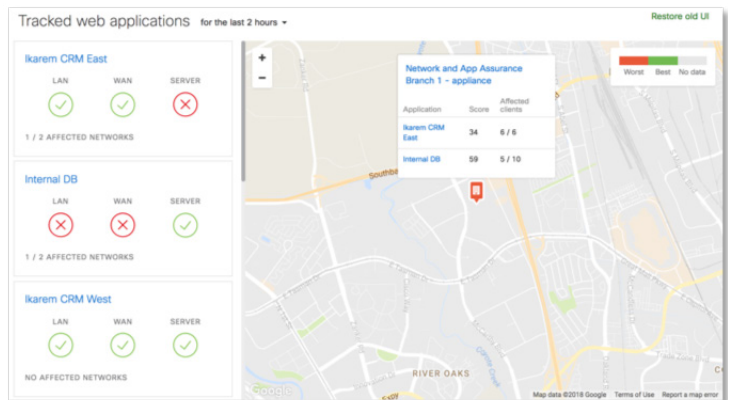
### Overview

Reliable, fast networks have become ubiquitous, driving innovation, productivity and instant collaboration, supported by the relentless growth of convenient cloud hosted applications. As the use of these apps and services grows, so too does our reliance on every step of the journey, from the application server to the desktop or mobile device.

Even with a powerful, proven network infrastructure like Cisco Meraki, the end-user experience can only be truly optimized by considering all contributing internal and external factors. Fast cloud application response times rely not only on a well designed, high performance LAN, but also on the performance of the service provider's infrastructure, the WAN or Internet, and the remote SaaS (software as a service) application itself.

Meraki Insight has been developed to provide end-to-end visibility into how end-users are experiencing the network by taking a more holistic view of the factors contributing to the end-user's perception of performance.

Busy IT teams benefit from improved insight and a drastic reduction in troubleshooting effort, enabling resources to focus on the true cause of end-user frustration and provide faster, better service. Faster problem resolution gives IT more time to support their organization's mission priorities.



### APPLICATION PERFORMANCE DEMYSTIFIED

- Monitor Software-as-a-Service (SaaS) applications
- Understand end user experience and trends over time
- True application throughput with live/actual traffic
- For every user in every network for every app

### INTELLIGENCE FOR THE WAN

- Performance management and troubleshooting, including the LAN, WAN, or ISP networks
- Key performance indicators including bandwidth, loss and latency
- Ideal for SD-WAN and multi-site deployments

### ACCELERATING IT

- Intelligent anomaly and outage detection
- Zero setup or configuration required
- Faster time to resolution by pinpointing the true source of the issue

### POWERED BY THE MERAKI FULL STACK

#### Simple and comprehensive policy management

- Seamless integration into the Meraki dashboard for true 'single pane-of-glass' network administration
- Built-in (zero-touch) traffic collector in MX appliances
- Proven Cisco Meraki scale, security and reliability